



MONTHLY MEMBERSHIP PROGRESS REPORT

Results as of: 5/31/2015

Multiple District 323

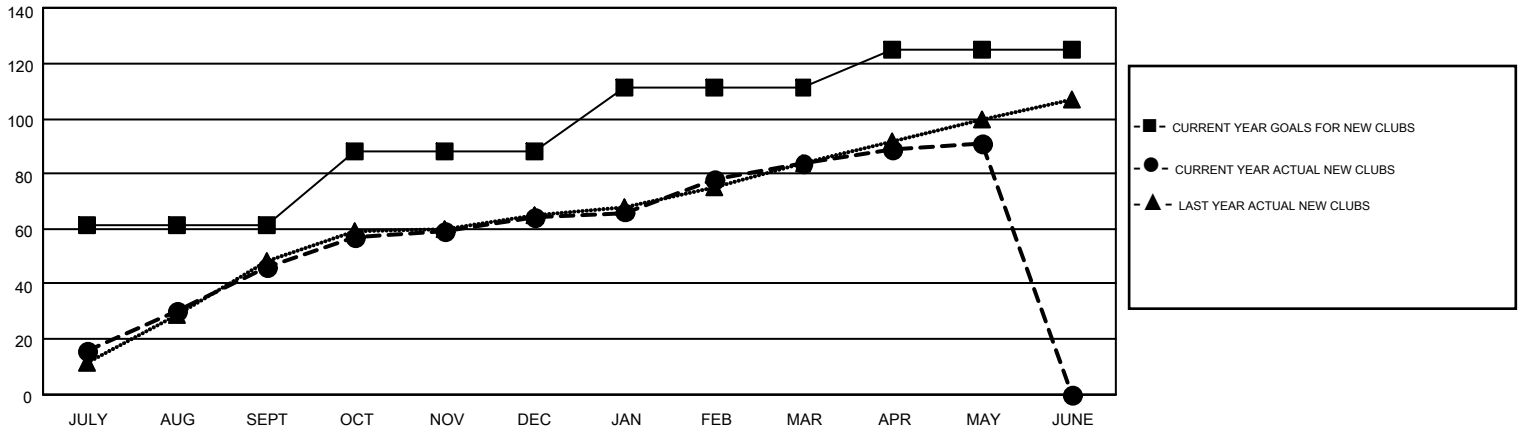
LOCATION: INDIA

GMT: KAMLESH JAIN

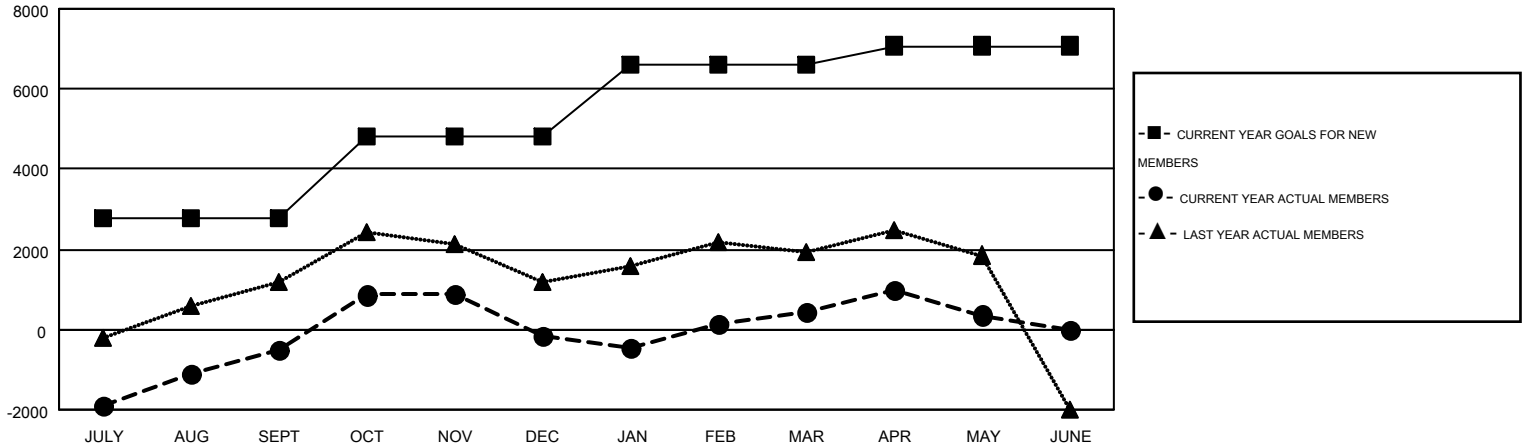
GMT CA 6

| Clubs | | | | | Members | | | | |
|-----------------------|---------------|-----------|---------------|---------------|-----------------------|-----------------|-------------------------------|-----------------|---------------|
| RESULTS FOR 2014-2015 | | | | | RESULTS FOR 2014-2015 | | | | |
| QUARTER | NEW CLUB GOAL | NEW CLUBS | DROPPED CLUBS | NET GAIN/LOSS | QUARTER | NEW MEMBER GOAL | CHARTER AND NEW MEMBERS ADDED | DROPPED MEMBERS | NET GAIN/LOSS |
| JULY/AUG/SEPT | 61 | 46 | 6 | 40 | JULY/AUG/SEPT | 2,767 | 3,445 | 3,960 | -515 |
| OCT/NOV/DEC | 27 | 18 | 39 | -21 | OCT/NOV/DEC | 2,061 | 2,349 | 1,994 | 355 |
| JAN/FEB/MAR | 23 | 20 | 13 | 7 | JAN/FEB/MAR | 1,791 | 1,731 | 1,125 | 606 |
| APR/MAY/JUNE | 14 | 7 | 15 | -8 | APR/MAY/JUNE | 460 | 1,367 | 1,452 | -85 |

GOALS AND ACTUAL NEW CLUBS CUMULATIVE



GOALS AND ACTUAL MEMBERS CUMULATIVE



| | | |
|------------------------|---|-----------------------------------|
| DROPPED CLUBS: 73 | 1016 CLUBS OF 1484 ADDED 1 OR MORE NEW MEMBERS | GENDER DISTRIBUTION |
| | | MALE 40,788 (72.94%) |
| | | FEMALE 15,130 (27.06%) |
| DROPPED MEMBERS | CLICK HERE FOR HEALTH ASSESSMENT DATA | FAMILY UNIT MEMBERS 23,669 |
| DECEASED 143 | | HEAD OF HOUSEHOLD 10,345 |
| CLUB CANCELLED 1,111 | | NON-HEAD OF HOUSEHOLD 13,324 |
| OTHER 7,275 | | |
| TOTAL 8,529 | | |